

Transition Monitoring

Transition Monitoring Service (TMS)

Euraplan offers a Transition Monitoring Service (TMS) which monitors, records and reconciles the movements of all assets between outgoing and incoming investment managers from their start to end positions, handing back to the pension scheme fully reconciled balances with the new managers. This transparency of activity identifies and reports any discrepancies in book cost, market values or cash positions. Clients who have utilised this service recently include BPB and Exel.

'Based on my experience at Safeway, a transition exercise is an extremely volatile time for a pension fund, with an enormous amount of transactions and financial exchanges taking place within a very short period of time.'

'If you do not have an independent system in place to record and monitor all the movements initiated by all the players actively involved, it is almost impossible to guarantee that nothing has gone astray. And, we are talking about millions of pounds!'

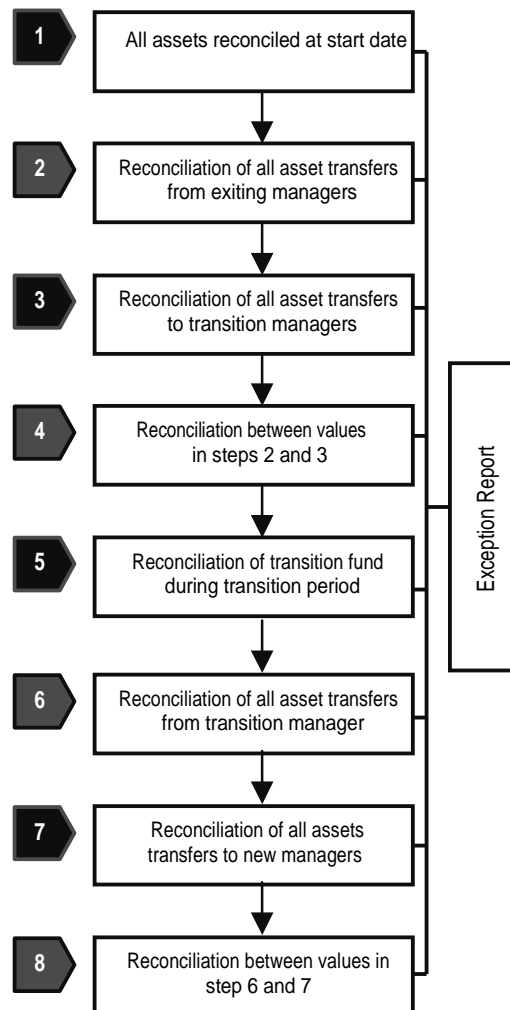
**Peter Baker, formerly Pensions Manager
Safeway Pension Scheme**

'At such a crucial stage of a fund's restructuring, it's essential that pension schemes have an independent guarantee that all fund assets are accounted for'





**Jimmy Walker
Pensions Manager
ExelPensions**

**Euraplan Limited
Suite 219, 2nd Floor
St Magnus House
3 Lower Thames Street
London, EC3R 6HD
Tel: 020-3146-8773
Email: sales@euraplan.co.uk
Web: www.euraplan.co.uk**





STEPS



Services

-  Full reconciliation of inspecie transfers.
-  Income tracking.
-  Full reconciliation of cash activity including bulk cash transfers from exiting managers.
-  Reconciliation exceptions reported for each step in process.

Added Value

-  Expertise in handling fund manager reorganisations.
-  Direct client liaison.
-  Clients specific output i.e reports, exceptional details and electronic data.
-  Close relationships with all major fund managers and custodians; supported by knowledge of their systems and procedures.



'Technology house that develops award winning pensions accounting & investment software and systems'

www.euraplan.co.uk